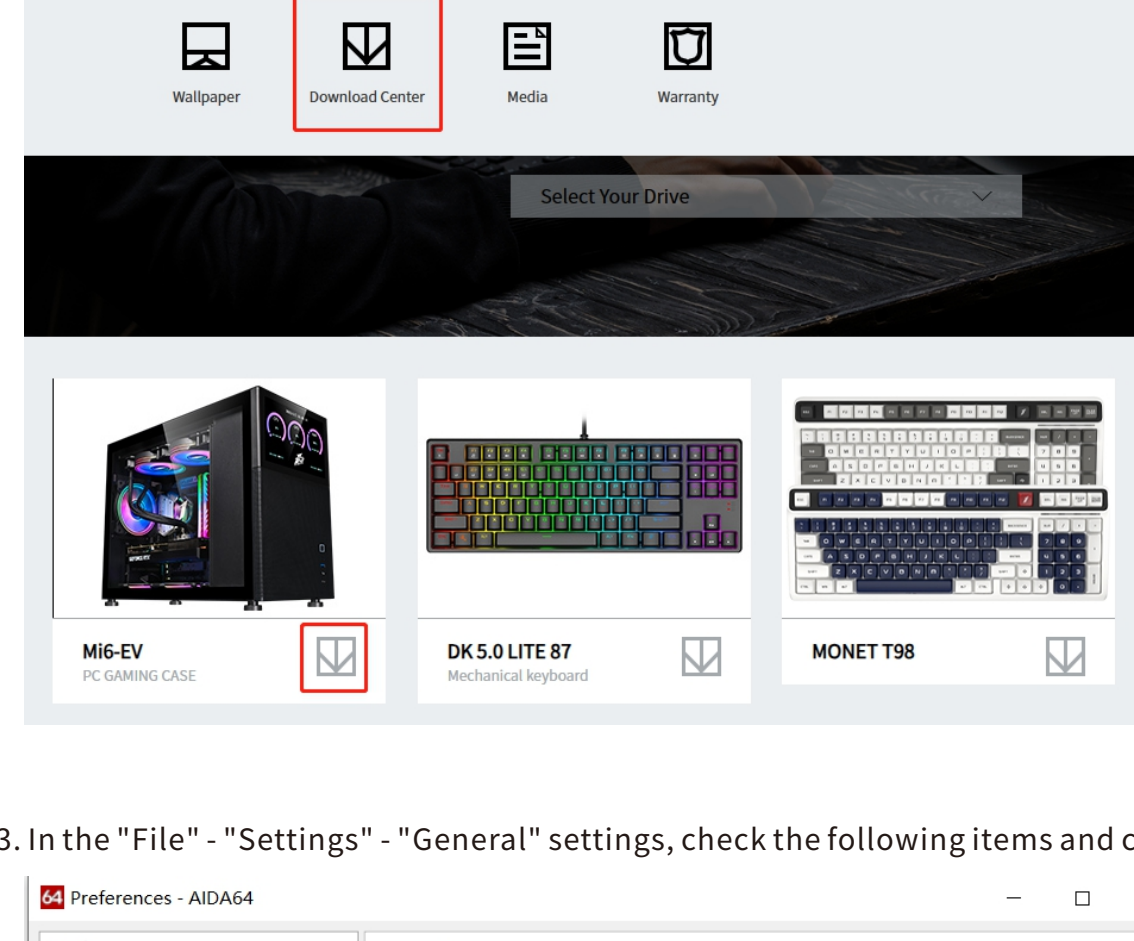


AIDA64 Extreme Screen Setup Guide

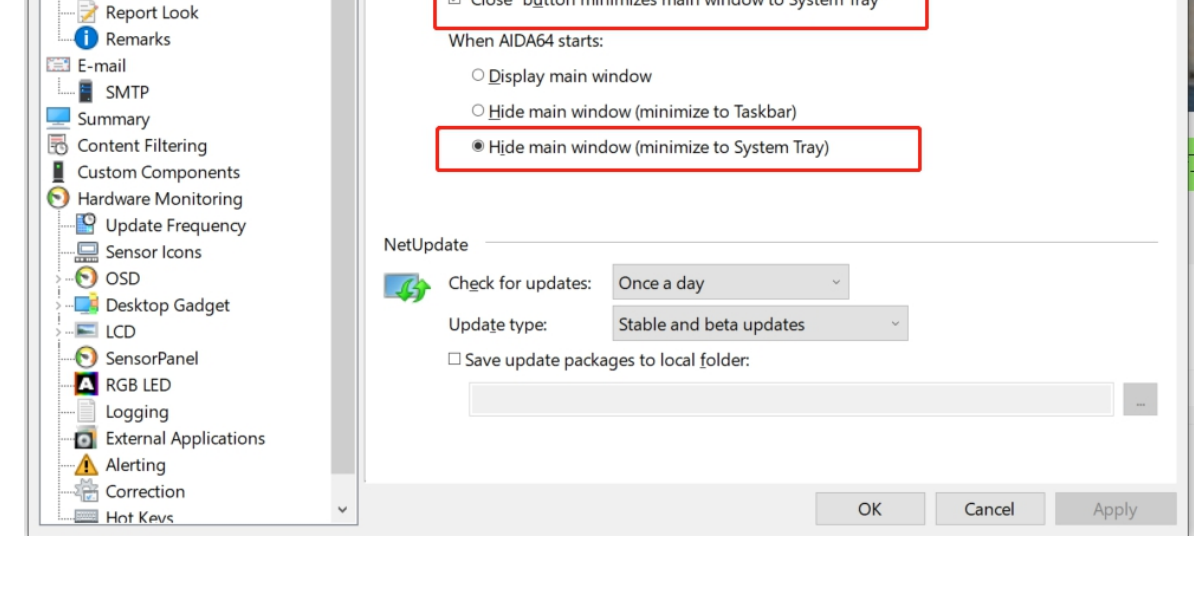
- 1.Install the AIDA64 Extreme software, then register and activate it
- 2.Download and install the driver via WWW.1STPLAYER.com

*Install the driver on a disk with more space

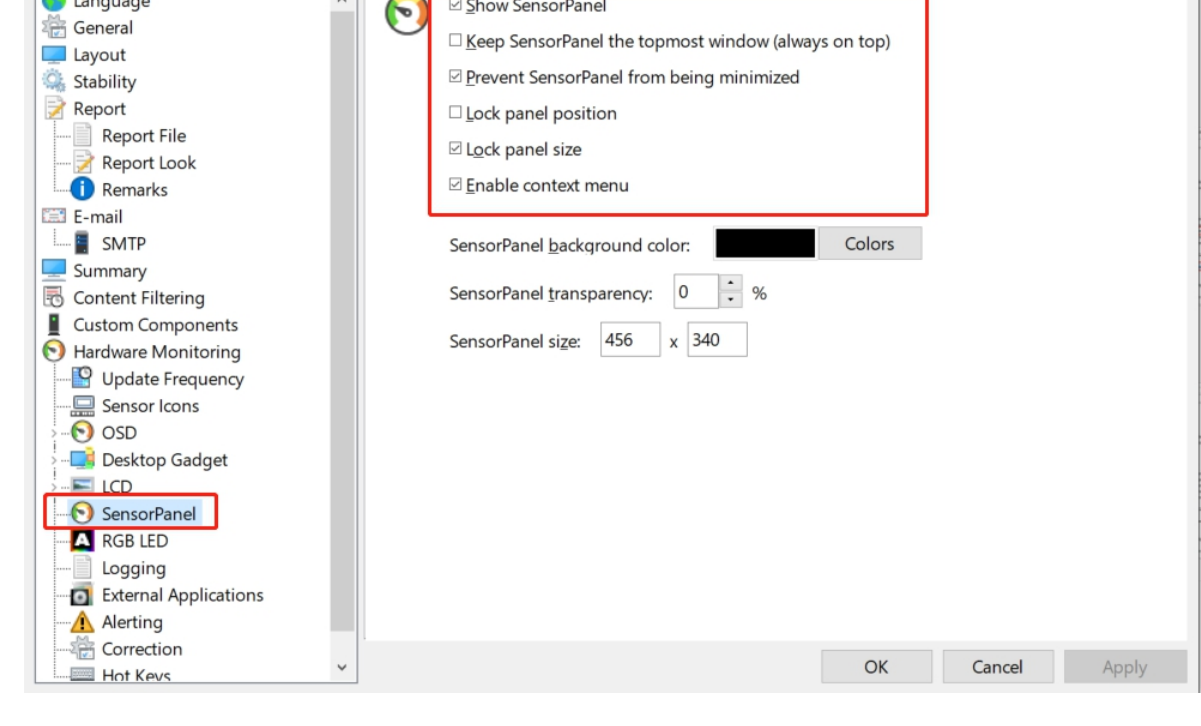
SUPPORT---DOWNLOAD CENTER--Mi6-EV



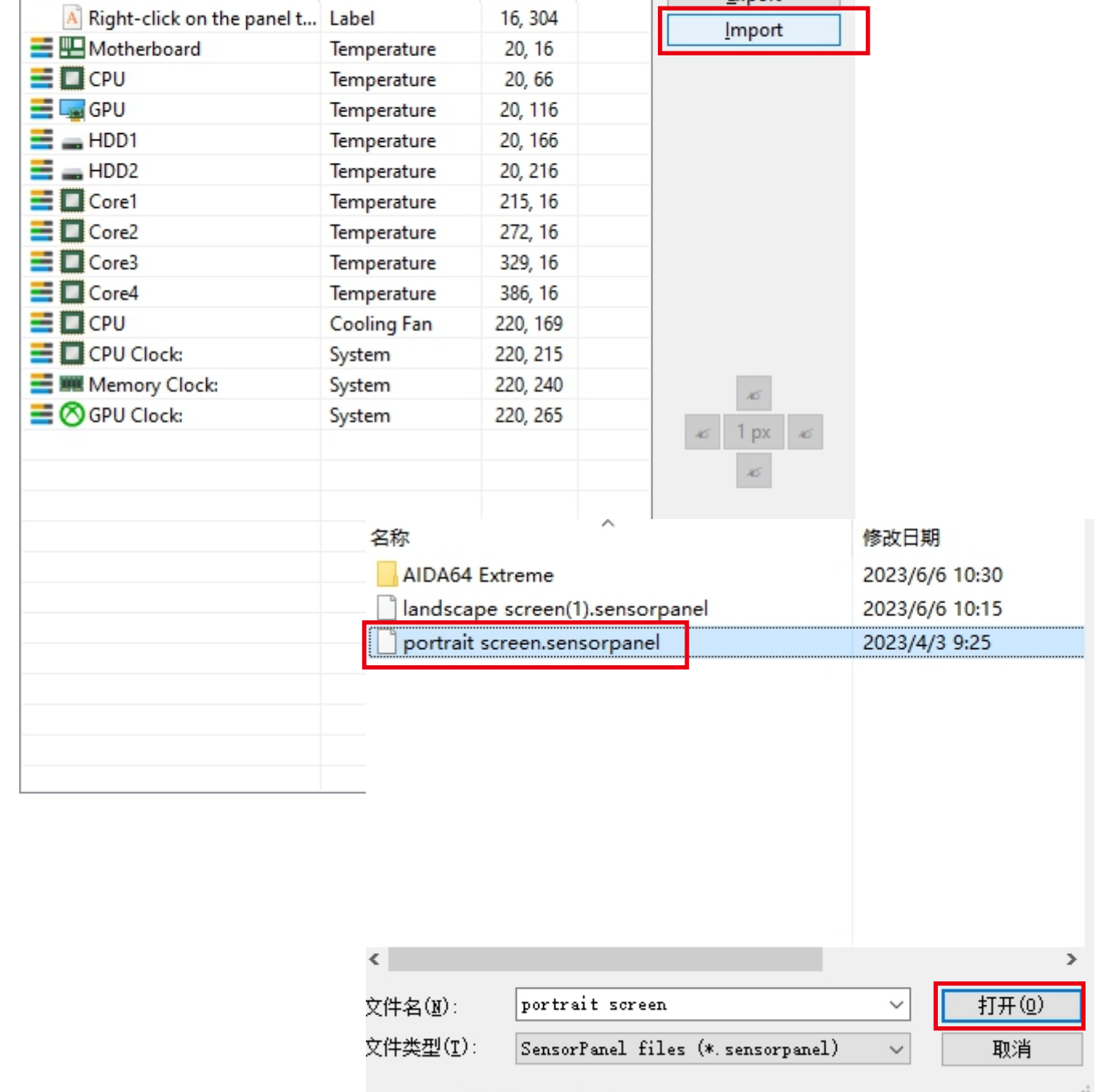
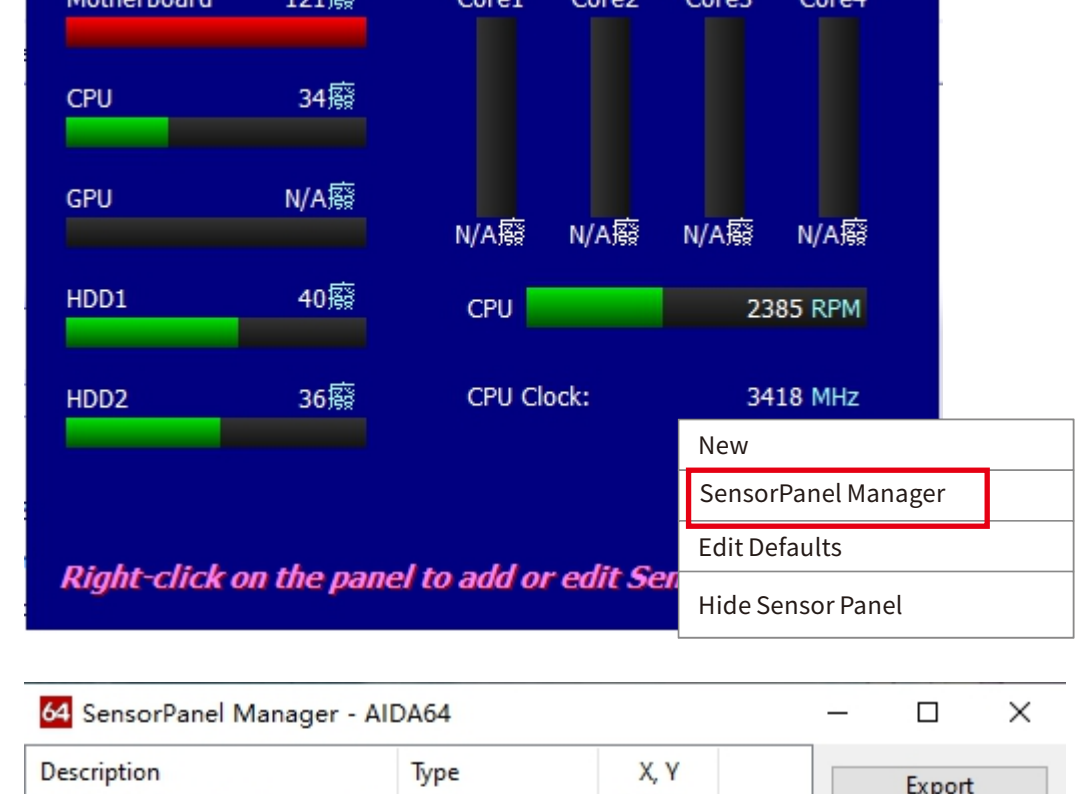
3. In the "File" - "Settings" - "General" settings, check the following items and click "Apply ":



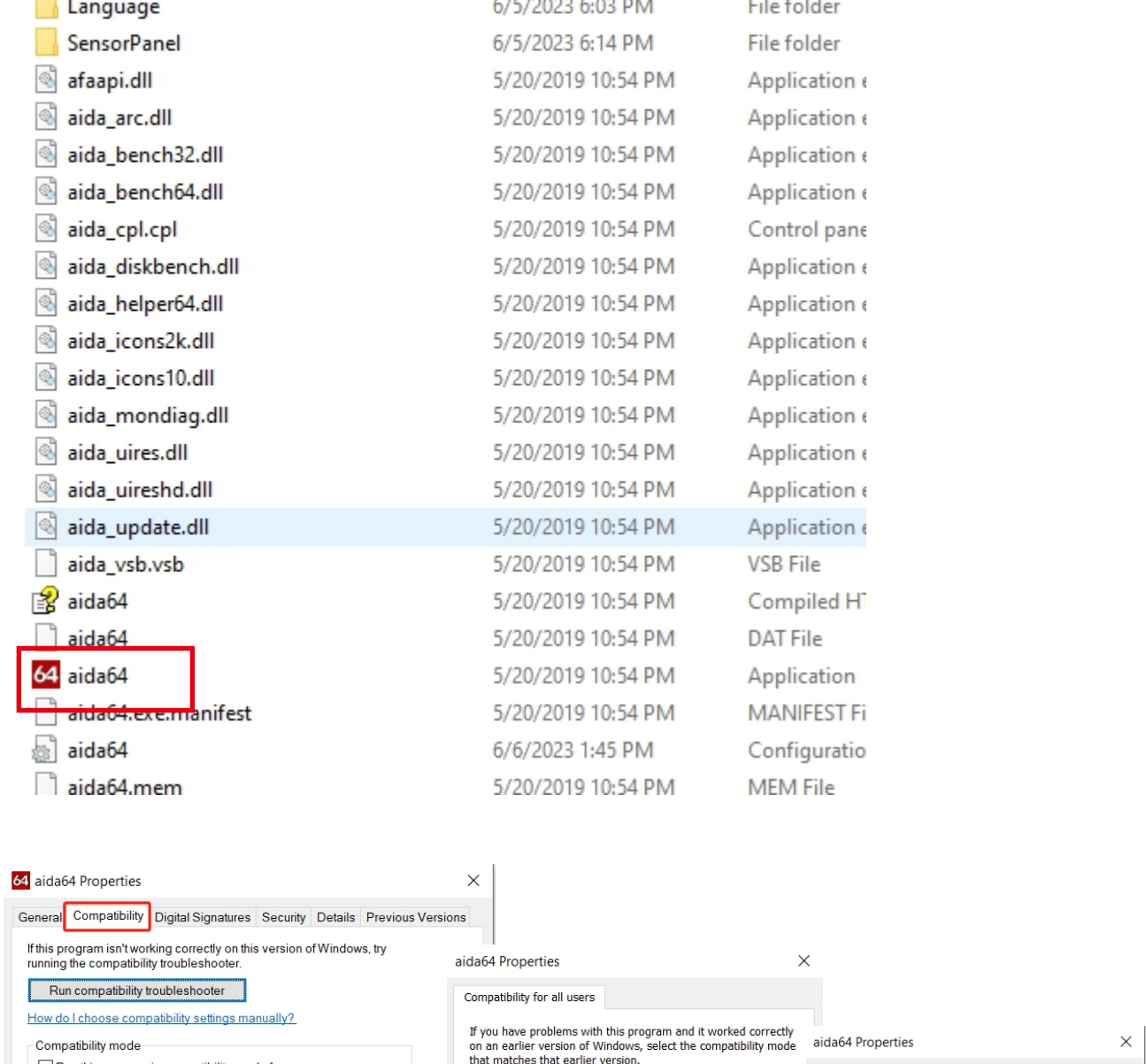
4. In the "Hardware Monitoring Tools" - "SensorPanel" settings, check the following items and click "Apply":



5. In the initial monitoring Page pop-up, right mouse click on the pop-up menu, select "Manage Sensor information Panel", select "Import", select the configuration file with the suffix "xxxxxx.sensorpanel" and "Open" - "OK".

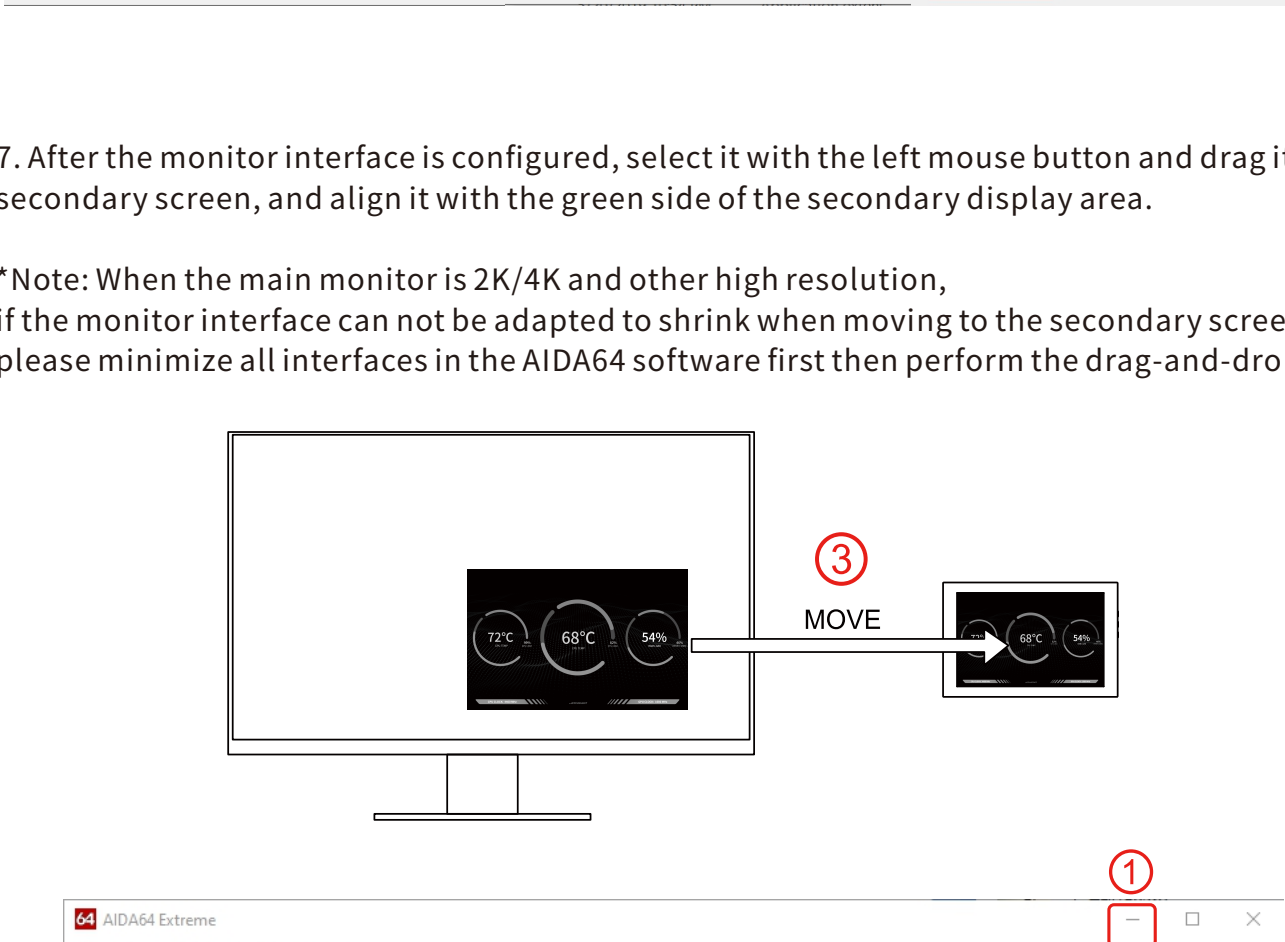


- 6.In different monitor (main screen) resolution/scaling ratio, the monitoring interface icons, text, etc., may be misaligned display. Adjustment methods: open AIDA64 installation directory, AIDA64 Extreme right-click on the main program "aida64.exe" icon, pop-up menu, select "Properties" - "Compatibility" - "Change settings for all users" - "Change high DPI settings"- check the box "Alternative High DPI Scaling Behaviour:-" - select "System (Enhanced)" and step by step "OK" the modified settings menu. Finally, right-click AIDA64 program icon on the lower right corner of the desktop and select "Exit" then restart the program.

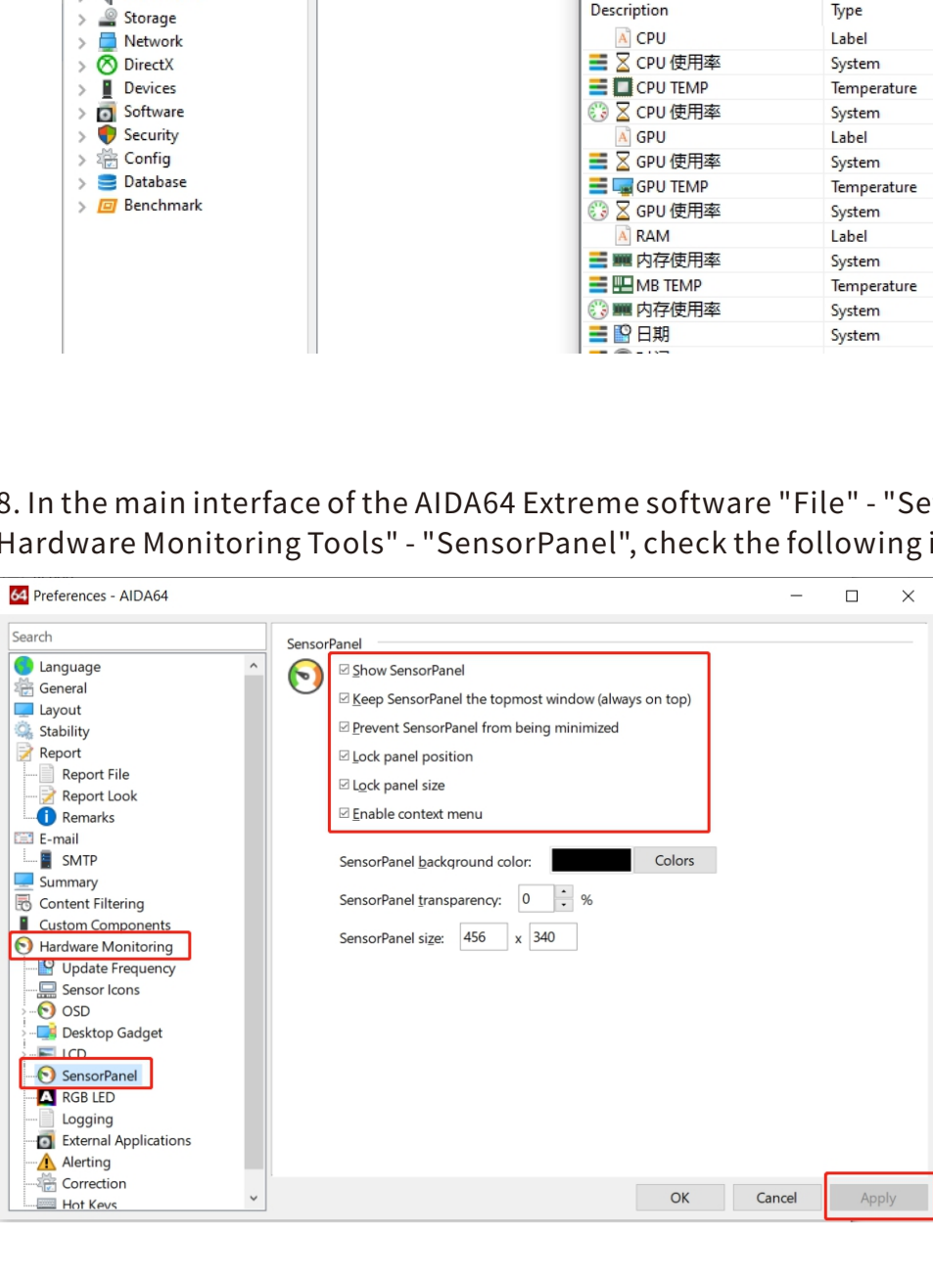


7. After the monitor interface is configured, select it with the left mouse button and drag it to the secondary screen, and align it with the green side of the secondary display area.

*Note: When the main monitor is 2K/4K and other high resolution, if the monitor interface can not be adapted to shrink when moving to the secondary screen, please minimize all interfaces in the AIDA64 software first then perform the drag-and-drop operation.



8. In the main interface of the AIDA64 Extreme software "File" - "Settings" - "Hardware Monitoring Tools" - "SensorPanel", check the following items and click "Apply".



- 9.Setup complete

For the driver validity period , please enter the following serial number:

UK4F4-3F2D6-FJD9J-C4D34-FYY12

UKXB1-Y3ED6-FJD9J-C4D34-FYY1U

UKIU4-933D6-FJD9J-C4D34-FYY1B