

# STEAM PUNK

16Pin(12 + 4)  
PCI-E 5.0 Cable



**Version 2.3**  
Edited by Fan  
2023.07.07

EDITED BY 1STPLAYER

# SPECIFICATIONS

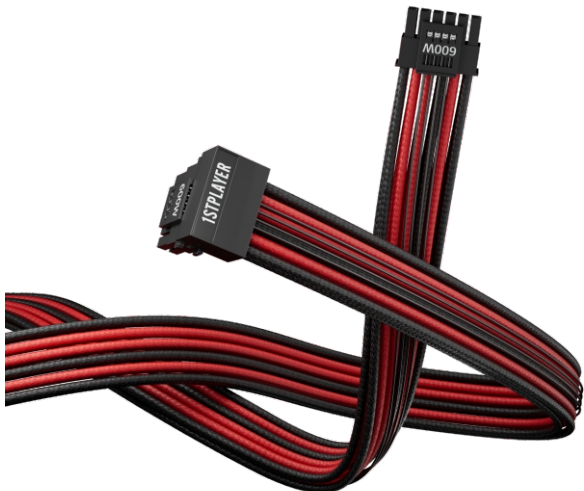
Model	FM2-B
Color	White/Black&red
Housing-A (to PC)	12+4Pin(bending)
Housing-B (to SMPS)	12+4Pin
Terminal(to PC)	High conductivity copper tin plating & Phosphor copper tin plating
Terminal(to SMPS)	High conductivity copper tin plating & Phosphor copper tin plating
Wire	16awg+28awg
Cable Length	700mm



**PCI-E 5.0 CABLE  
FM2-B**

EDITED BY 1STPLAYER

# PICTURES

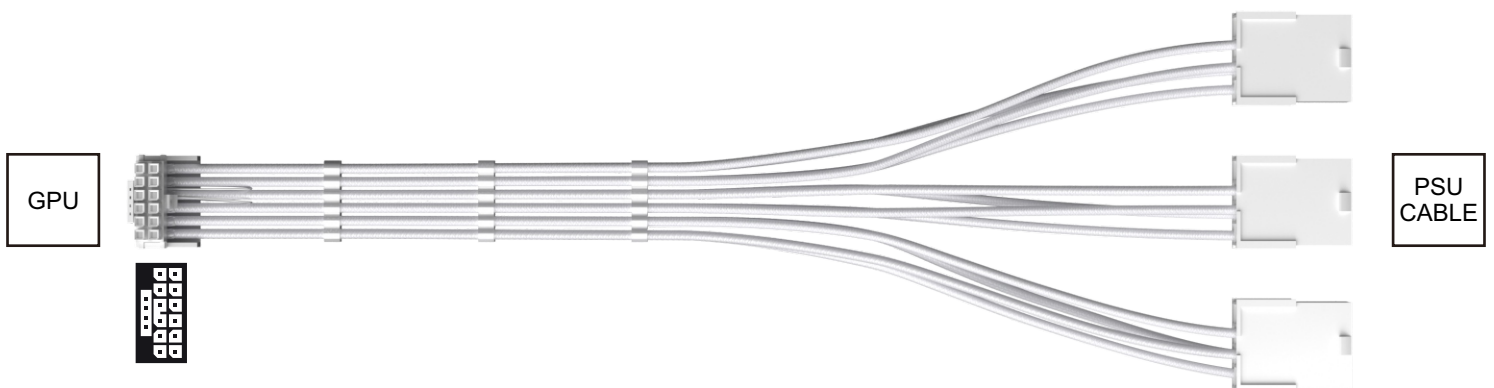


PCI-E 5.0 CABLE  
FM2-B

EDITED BY 1STPLAYER

# SPECIFICATIONS

Model	FM3-B
Color	White/Black
Housing-A (to PC)	12+4Pin(bending)
Housing-B (to SMPS)	3*8Pin
Terminal(to PC)	High conductivity copper tin plating & Phosphor copper tin plating
Terminal(to SMPS)	High conductivity copper gold plated
Wire	16awg+18awg+28awg
Cable Length	300mm



**PCI-E 5.0 CABLE  
FM3-B**

EDITED BY 1STPLAYER



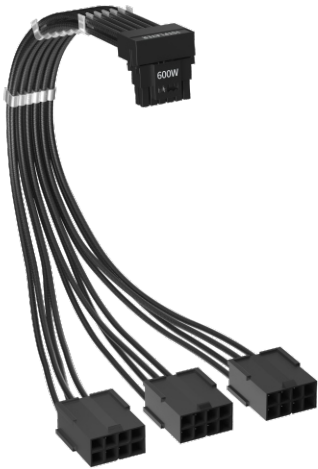
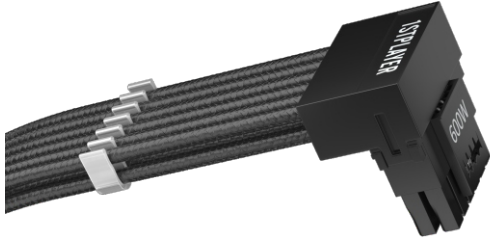
# PICTURES



**PCI-E 5.0 CABLE  
FM3-B**

EDITED BY 1STPLAYER

# PICTURES

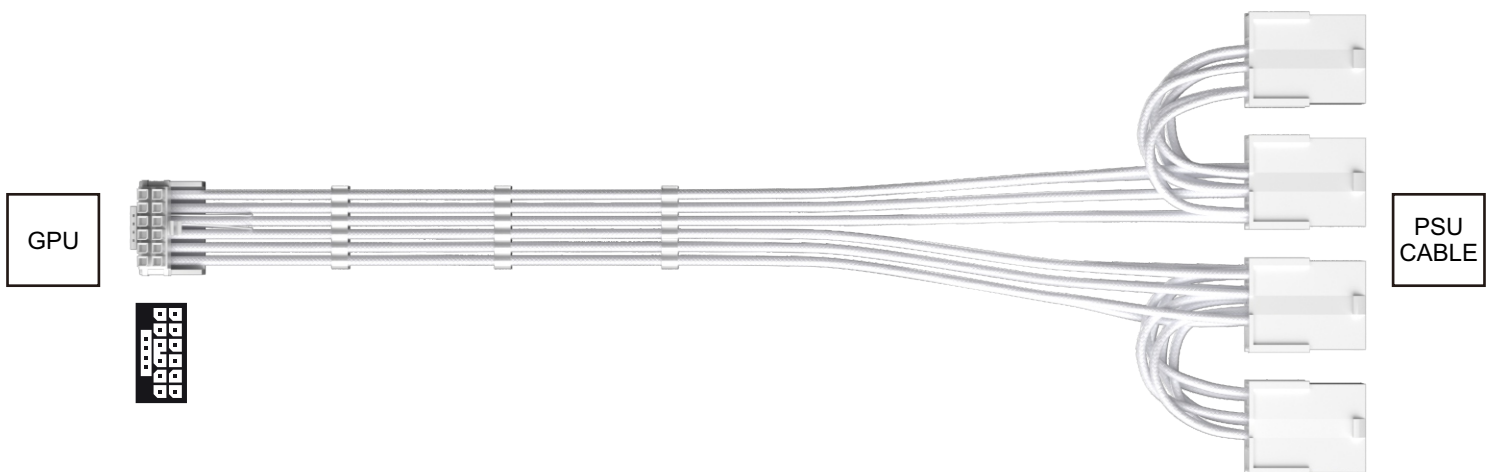


PCI-E 5.0 CABLE  
FM3-B

EDITED BY 1STPLAYER

# SPECIFICATIONS

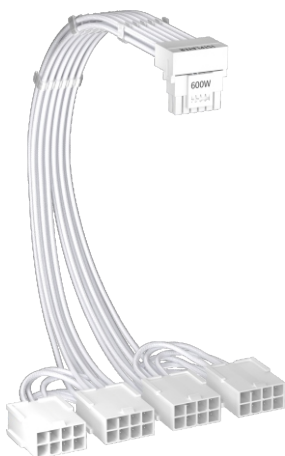
Model	FM4-B
Color	White/Black
Housing-A (to PC)	12+4Pin(bending)
Housing-B (to SMPS)	4*8Pin
Terminal(to PC)	High conductivity copper tin plating & Phosphor copper tin plating
Terminal(to SMPS)	High conductivity copper gold plated
Wire	16awg+18awg+28awg
Cable Length	320mm



**PCI-E 5.0 CABLE  
FM4-B**

EDITED BY 1STPLAYER

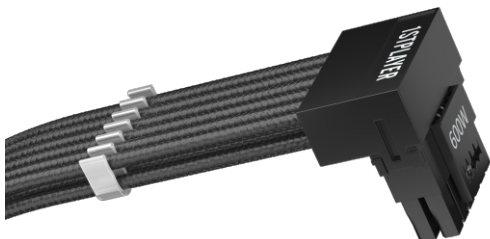
# PICTURES



**PCI-E 5.0 CABLE  
FM4-B**

EDITED BY 1STPLAYER

# PICTURES



PCI-E 5.0 CABLE  
FM4-B

EDITED BY 1STPLAYER