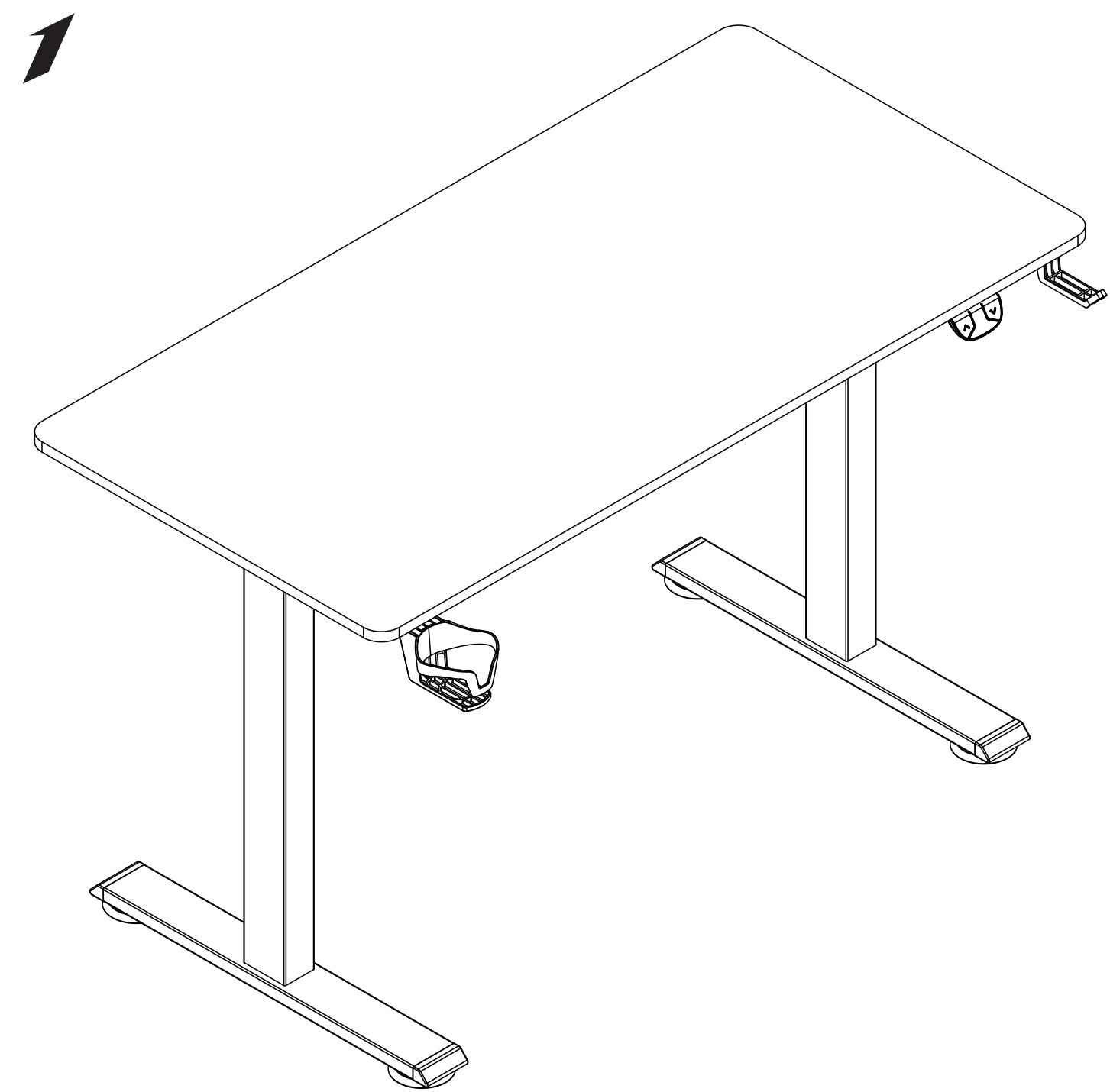


MOTO-C

ELECTRIC ADJUSTABLE TABLE USER MANUAL

电动升降桌安装说明书



WWW.1STPLAYER.COM



PARTS LIST / 部件清单

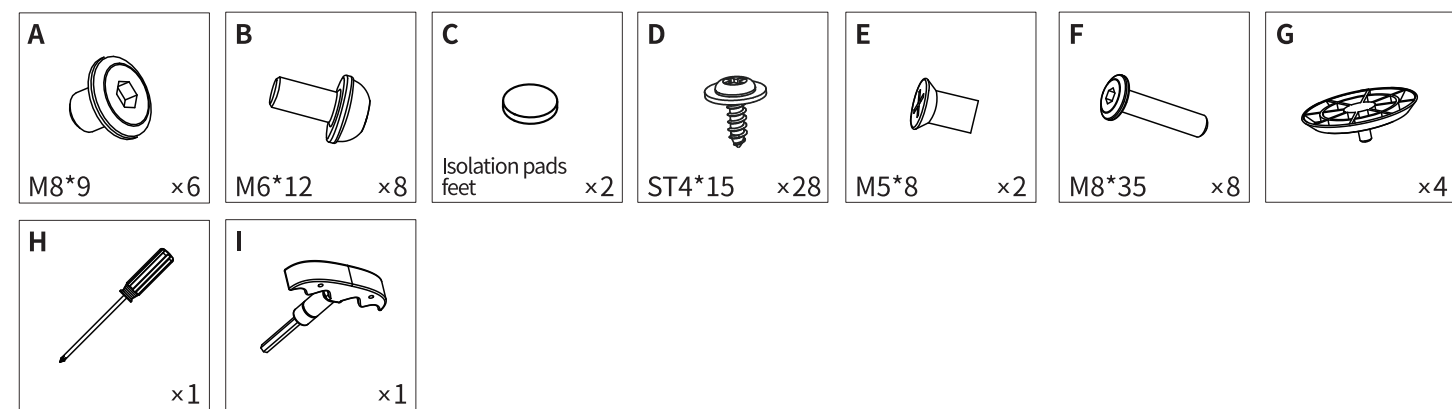
SCREW ACCESSORIES / 螺丝配件

Before you begin to assemble your desk, sort your screws by number and use the chart below to confirm you have all the required accessories.

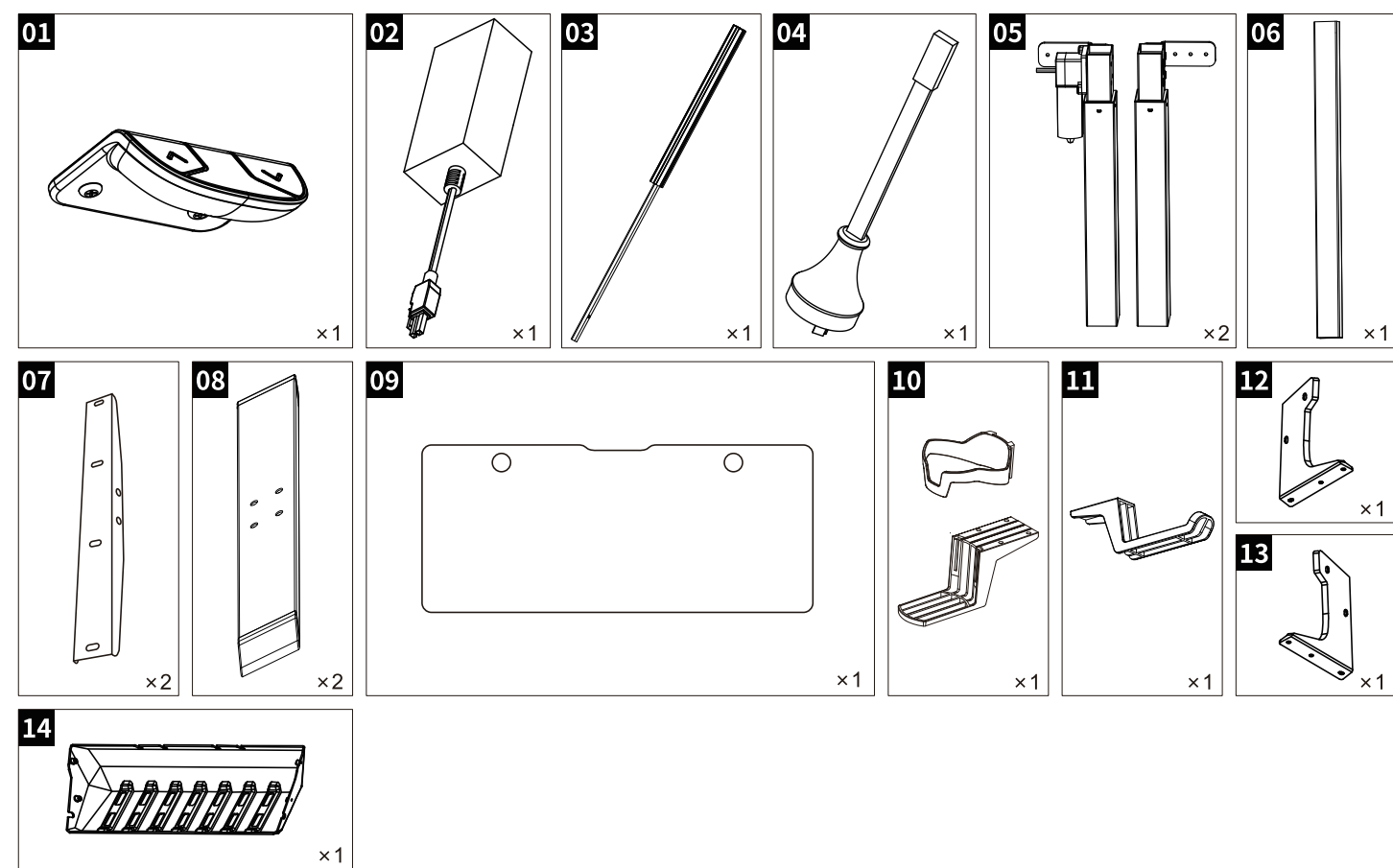
在开始组装之前, 请按编号对螺栓进行分类, 然后使用下表确认您拥有所有必需的配件。

Screws need to be checked and tightened again after whole desks finished installation.

整个电竞桌安装完成后, 需要检查螺栓并再次拧紧。

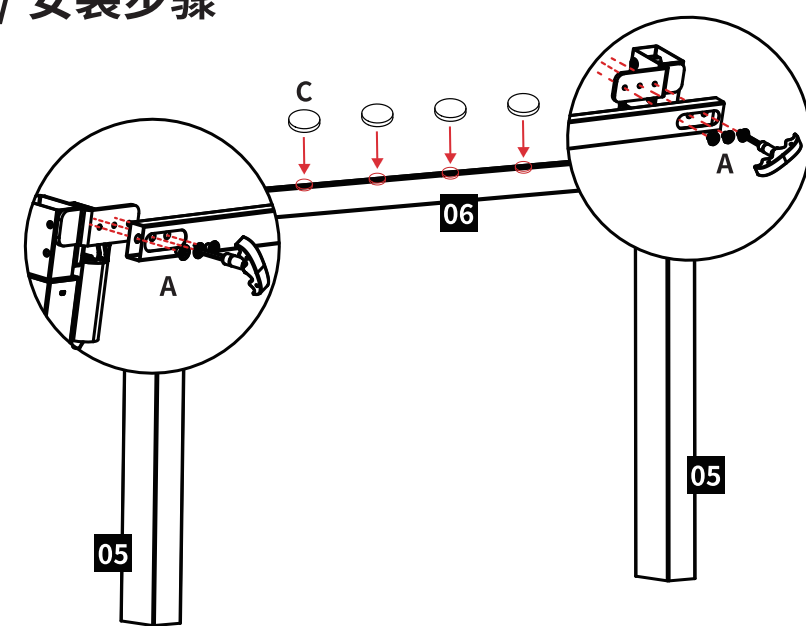
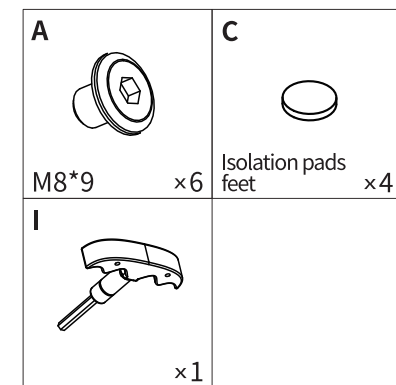


PARTS ACCESSORIES / 器械配件

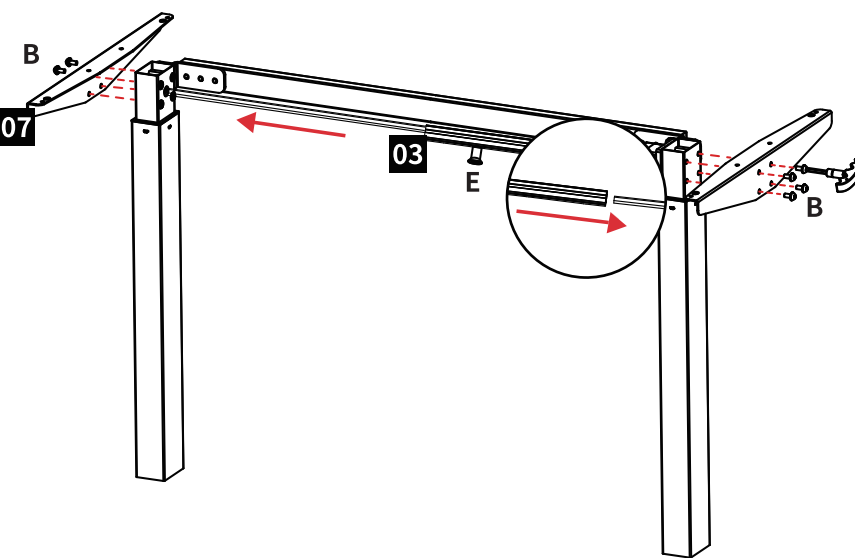
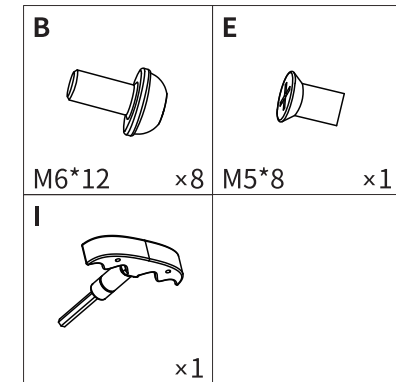


INSTALLATION STEPS / 安装步骤

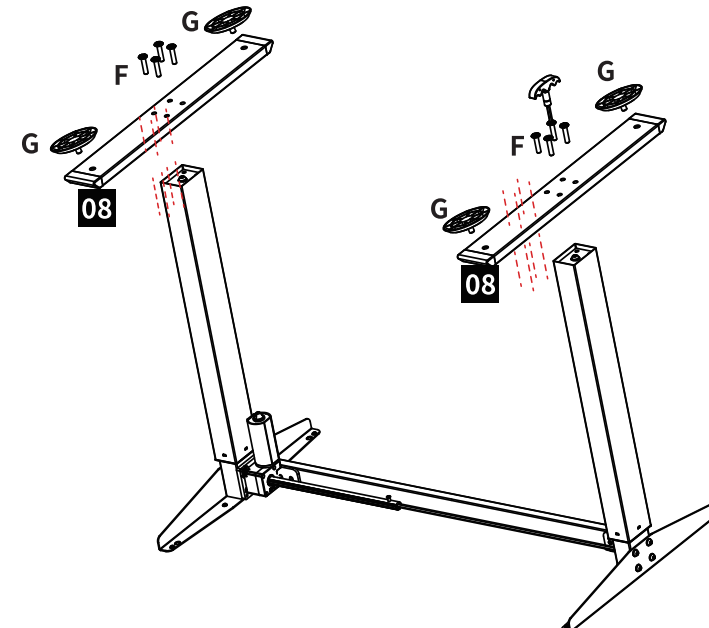
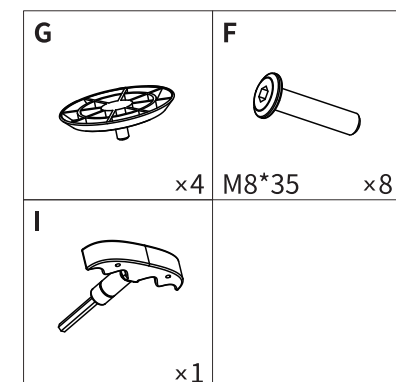
STEP 1 / 步骤一



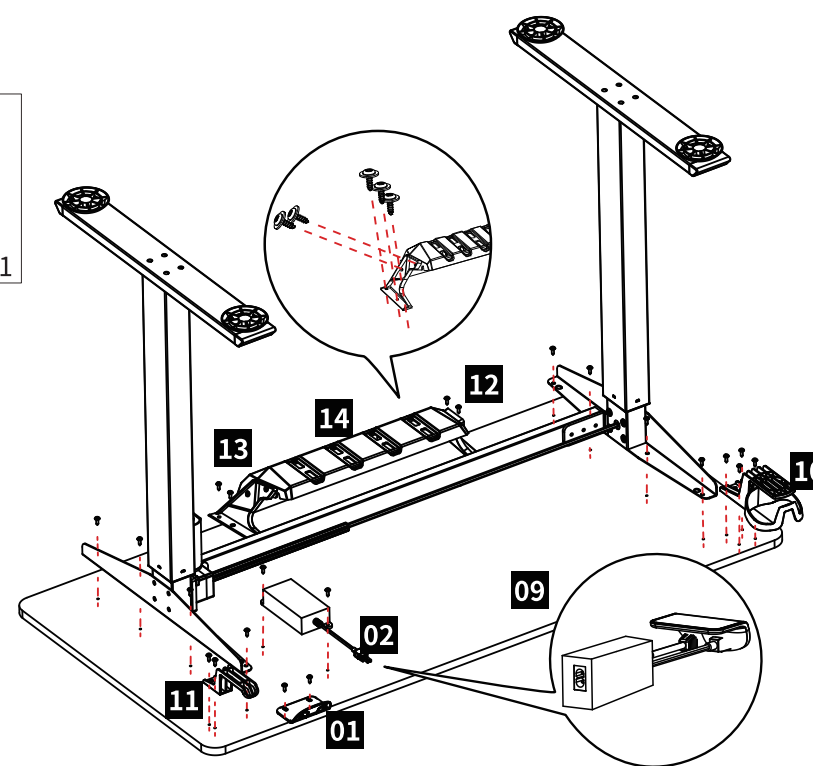
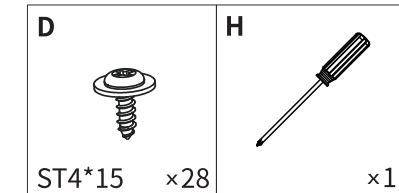
STEP 2 / 步骤二



STEP 3 / 步骤三



STEP 4 / 步骤四



STEP 5 / 步骤五



Press and hold ^ and v for 3s until "---" is on the screen, release the button, The desktop automatically moves up and down to find the highest and lowest height. When this process stops, the reset operation is complete.

初次安装完成后同时按住“^v”键3秒, 直到屏幕上出现"--", 松开按钮后桌面会自动上下移动, 找到最高和最低的高度, 当这个过程停止时, 复位操作就完成了。

INSTRUCTIONS OF CONTROLLER OPERATING / 控制器操作说明

The display flashes when the "^" button is pressed for 3s, and when the button is released, it automatically reaches the highest point on the table, and can be stopped midway by any press.

当按下 "^" 按钮3秒后, 显示屏会闪烁, 松开按钮后, 会自动达到桌面的最高点, 并且可以在中途任意按动停止。

The display flashes when the "v" button is pressed for 3s, and when the button is released, it automatically reaches the lowest point on the table, and can be stopped midway by any press.

当按下 "v" 按钮3秒后, 显示屏会闪烁, 松开按钮后, 会自动达到桌面的最低点, 并且可以在中途任意按动停止。